

APPLICATION:

PRODUCT NAME: **DrainKing WASTE VALVE
ROUGH CHROME**

JOB NAME:

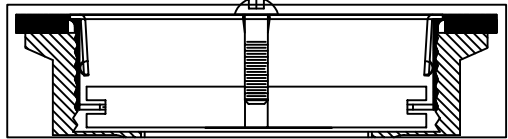
SPECIAL CONFIGURATION
 CHECK BASE MODEL AND OPTIONS

QUANTITY:

ITEM NO.

MODEL:

28991 w/ VR FLAT STRAINER & KNOB



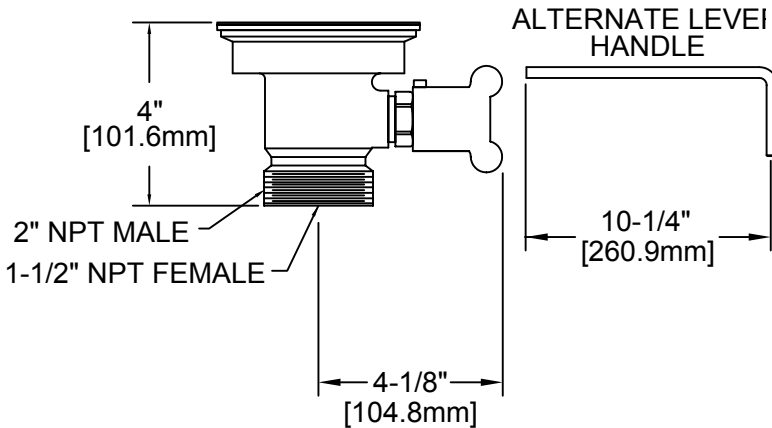
OPTIONS OR MODIFICATIONS:

- SUPPLY LINES (24" OR 36") CIRCLE LENGTH
- ADD-ON FAUCET (6", 8", 10", 12", 14", 16") CIRCLE
- IN-LINE DUAL CHECK VALVE
- HANDLES (CROSS OR WRIST) CIRCLE STYLE
- VANDAL RESISTANT KIT
- OTHER _____



FEATURES:

- * DUAL TEFLON SEALS
- * STAINLESS STEEL BALL
- * CAST RED BRASS BODY, CHROME PLATED
- * EXTRA STURDY STAINLESS STEEL CLAMPING RING
- * "CLEAR THROUGH " OPENING - NO NEED TO DISASSEMBLE IF SNAKING IS REQUIRED
- * INDUSTRY STANDARD "SEALING" ANGLE - FITS FLUSH TO STANDARD STAINLESS STEEL SINKS
- * VANDAL RESISTANT STAINLESS STEEL FLAT STRAINER
- * VANDAL RESISTANT KNOB
- * 1/4 TURN FULLY OPENS AND CLOSES VALVE
- * SUPPLIED WITH:
ALTERNATE LEVER HANDLE

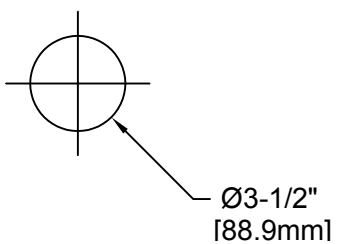


DRAIN RATE:
* 12 GPM

SHIPPING WEIGHT
* 5.0 LBS

ROUGH-IN:

DRAIN:



ANSI/A112.18.1M

FISHER

FISHER MANUFACTURING COMPANY
TOLL FREE: 800-421-6162 - FAX: 800-832-8238
information@fisher-mfg.com - www.fisher-mfg.com